



**3828-3878 CARSON ST.
TORRANCE, CALIFORNIA**

PROPERTY HIGHLIGHTS

- 6-building multi-tenant office campus in the heart of the Central Torrance Business District
- Identity opportunity on existing monument signage
- Responsive on-site property management & engineering
- Free parking proportionate to office and medical uses
- Central location to affluent residential neighborhoods
- Amenity-rich epicenter near Del Amo Fashion Center
- Entire business park updated with new roof tiles and flat roof surfaces
- Upgraded monument signage
- Outdoor seating areas
- Exterior painting and facade upgrade
- Wireless after-hours access control system
- Variety of efficient office layouts

For information, please contact:

Eric Lastition

Exec. Managing Director
t 310-491-2047
eric.lastition@nmrk.com
CA RE Lic. #01119647

Geoff Ludwig

Exec. Managing Director
t 310-491-2077
geoff.ludwig@nmrk.com
CA RE Lic. #01232244

Zachary Caine

Associate Director
t 310-491-2089
zachary.caine@nmrk.com
CA RE Lic. #02062263

nmrk.com

NEWMARK

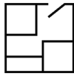
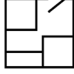

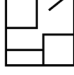
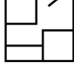

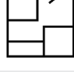
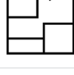

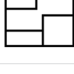

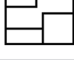

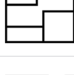







the **Muller**
company



TORRANCE EXECUTIVE PLAZA

3828-3878 CARSON ST.
TORRANCE, CALIFORNIA

OFFICE AVAILABILITY FOR LEASE

| BLDG / SUITE | SQ FT | DESCRIPTION | RENTAL RATE | CLICK FLOOR PLAN | CLICK VIRTUAL TOUR |
|--------------|----------|--|--|---|---|
| 3838 / 105 | 5,539 sf | Fully built out medical space. <i>(Available 3/1/2026)</i> | MEDICAL RATE \$3.50 per SF Modified Gross |  | -- |
| 3838 / 200 | 2,116 sf | 2 offices, kitchenette, storage, open space. | \$2.90 per SF Full Service Gross |  |  |
| 3848 / 105 | 1,619 sf | 5 offices, kitchenette, open space. | \$2.90 per SF Full Service Gross |  | -- |
| 3848 / 110 | 2,950 sf | 4 offices, reception, conference, kitchen, open space. | \$2.90 per SF Full Service Gross |  |  |
| 3848 / 310 | 498 sf | Mini-suite with access to a common kitchen and conference room. <i>(Available 1/1/2026)</i> | \$1,643.40 per Mo Full Service Gross |  | -- |
| 3848 / 320 | 911 sf | 3 offices. | \$2.90 per SF Full Service Gross |  |  |
| 3858 / 202 | 586 sf | Open space. | \$1,875.20 per Mo Full Service Gross |  |  |
| 3858 / 301 | 2,029 sf | 4 offices, conference, kitchenette, open space. | \$2.90 per SF Full Service Gross |  |  |
| 3858 / 303 | 2,000 sf | 6 offices, conference, kitchenette. | \$2.90 per SF Full Service Gross |  | -- |
| 3868 / 110 | 2,988 sf | 8 offices, conference, kitchen, open space, storage. | \$2.90 per SF Full Service Gross |  |  |
| 3868 / 205 | 520 sf | 1 office and reception area. | \$1,664.00 per Mo Full Service Gross |  | -- |
| 3868 / 209 | 554 sf | 1 office, open area, reception. <i>(Available 1/1/2026)</i> | \$1,772.80 per Mo Full Service Gross |  | -- |
| 3878 / 220 | 3,181 sf | 11 offices, conference room, kitchen. <i>(MTM Tenant. Tour by appointment only.)</i> | \$2.90 per SF Full Service Gross |  | -- |
| 3878 / 225 | 2,671 sf | 6 offices, reception, kitchen, storage. | \$2.90 per SF Full Service Gross |  |  |

Corporate License #01355491

NEWMARK

the **Muller**
company

The information contained herein has been obtained from sources deemed reliable but has not been verified and no guarantee, warranty or representation, either express or implied, is made with respect to such information. Terms of sale or lease and availability are subject to change or withdrawal without notice.



TORRANCE
EXECUTIVE PLAZA

**3828-3878 CARSON ST.
TORRANCE, CALIFORNIA**

SITE PLAN



Corporate License #01355491

NEWMARK

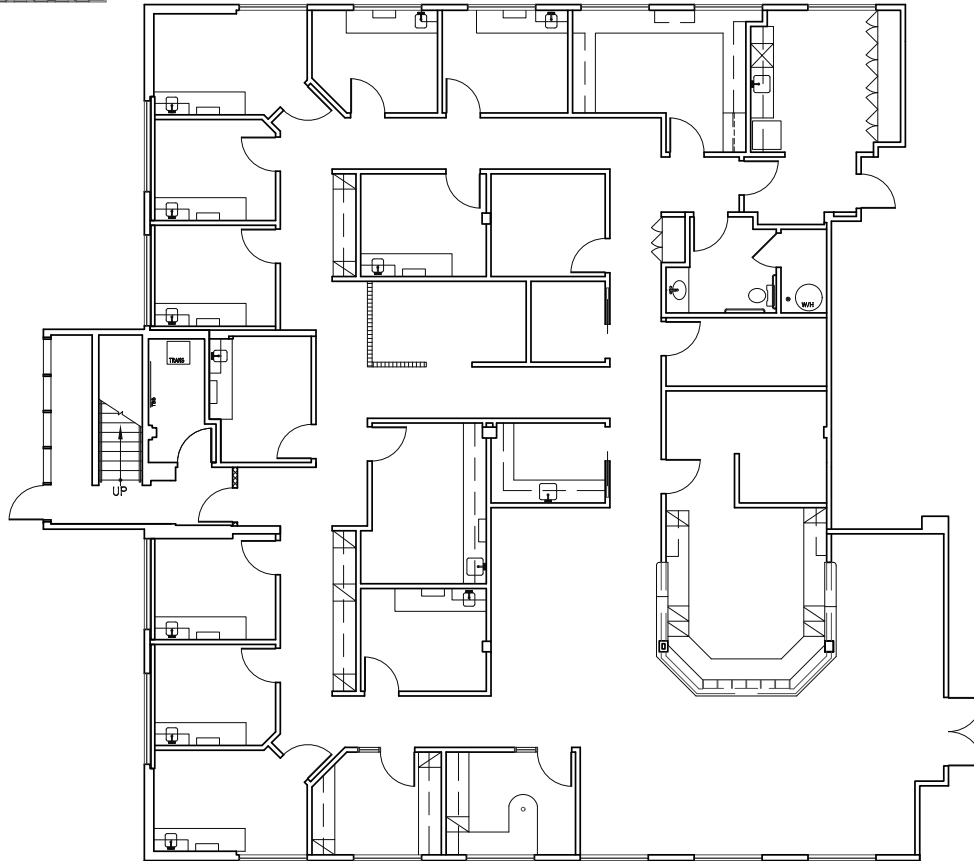
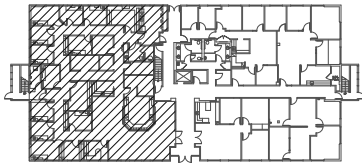
the **Muller**
company

The information contained herein has been obtained from sources deemed reliable but has not been verified and no guarantee, warranty or representation, either express or implied, is made with respect to such information. Terms of sale or lease and availability are subject to change or withdrawal without notice.



TORRANCE EXECUTIVE PLAZA

3828-3878 CARSON ST.
TORRANCE, CALIFORNIA



3838 Carson Street
Torrance, CA 90503



SUITE 105
SCALE: 1/16"=1'-0"
DATE: 06-17-24
5,539 RSF

BACK TO AVAILABILITY

Corporate License #01355491

NEWMARK

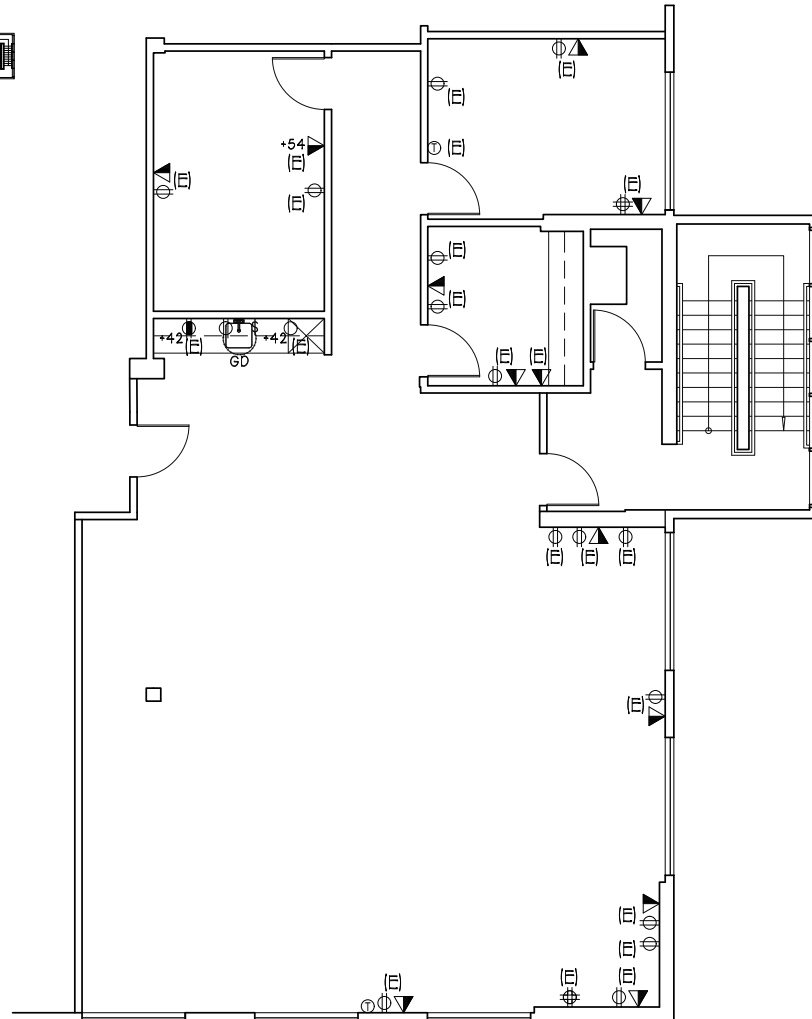
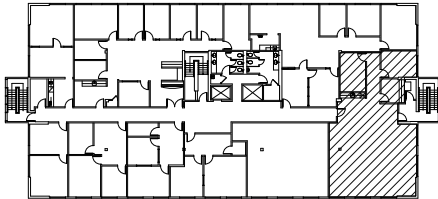
the **Muller**
company

The information contained herein has been obtained from sources deemed reliable but has not been verified and no guarantee, warranty or representation, either express or implied, is made with respect to such information. Terms of sale or lease and availability are subject to change or withdrawal without notice.



TORRANCE EXECUTIVE PLAZA

3828-3878 CARSON ST.
TORRANCE, CALIFORNIA



3838 Carson Street
Torrance, CA 90503



SUITE 200

SCALE: N.T.S.
DATE: 12-13-24
2,116 RSF

BACK TO AVAILABILITY

Corporate License #01355491

NEWMARK

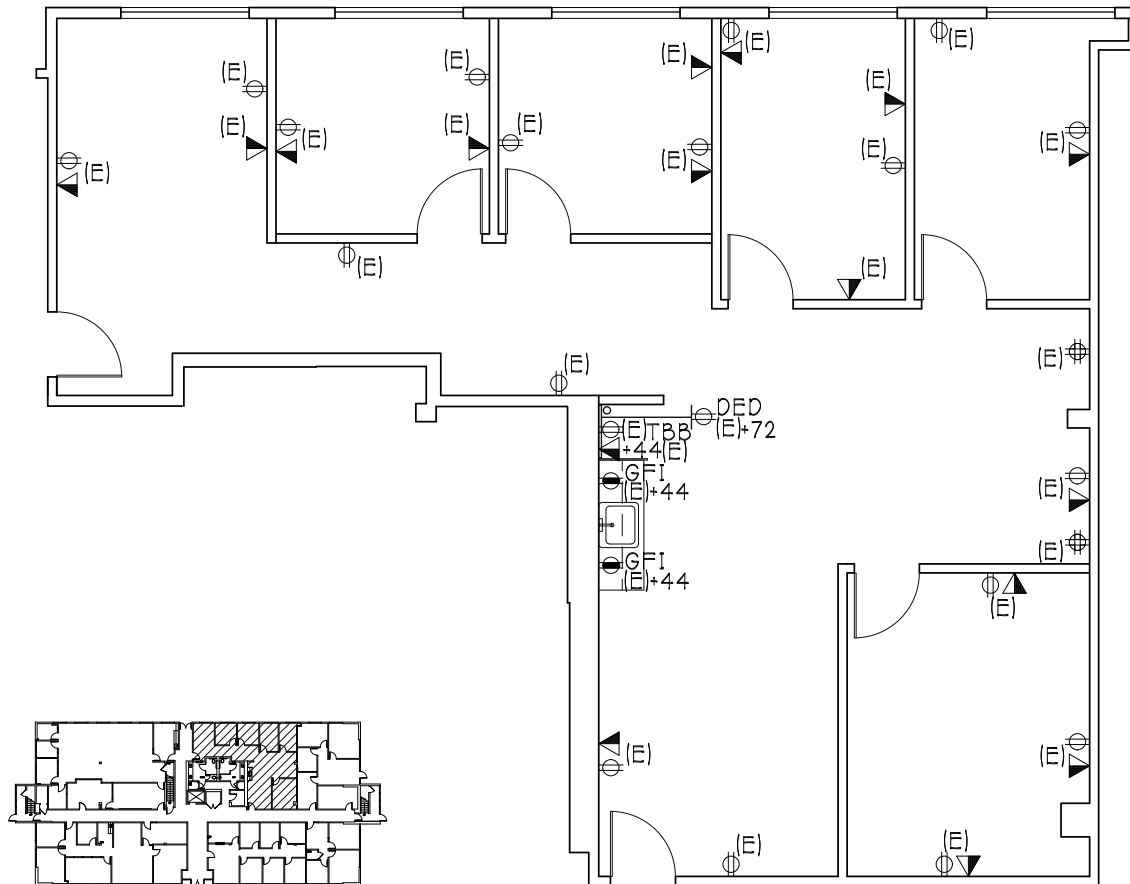
the **Muller**
company

The information contained herein has been obtained from sources deemed reliable but has not been verified and no guarantee, warranty or representation, either express or implied, is made with respect to such information. Terms of sale or lease and availability are subject to change or withdrawal without notice.

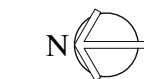


TORRANCE EXECUTIVE PLAZA

3828-3878 CARSON ST.
TORRANCE, CALIFORNIA



3848 Carson Street
Torrance, CA 90503



SUITE 105

SCALE: 1/8"=1'-0"
DATE: 02-28-25
1,619 RSF

BACK TO AVAILABILITY

Corporate License #01355491

NEWMARK

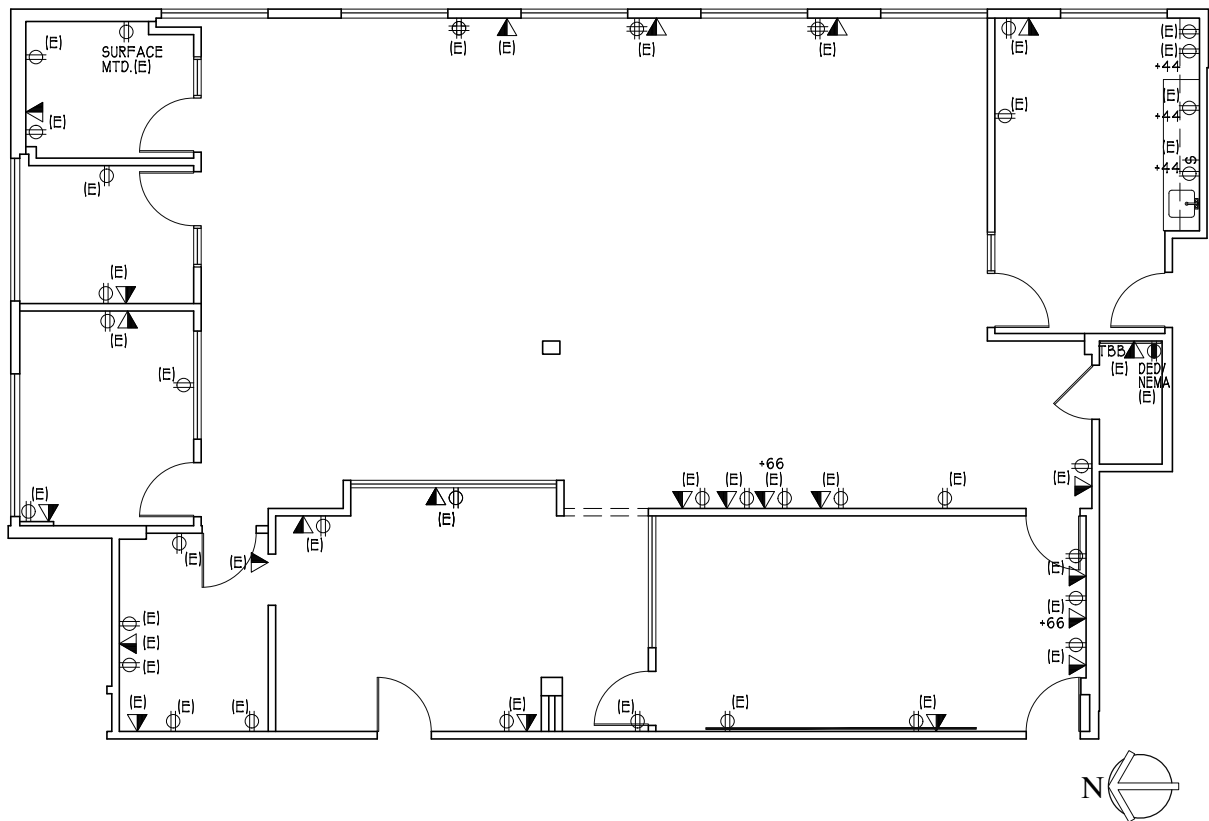
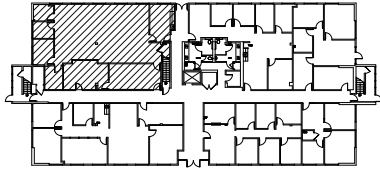
the **Muller**
company

The information contained herein has been obtained from sources deemed reliable but has not been verified and no guarantee, warranty or representation, either express or implied, is made with respect to such information. Terms of sale or lease and availability are subject to change or withdrawal without notice.



TORRANCE EXECUTIVE PLAZA

3828-3878 CARSON ST.
TORRANCE, CALIFORNIA



3848 Carson Street
Torrance, CA 90503

SUITE 110

SCALE: N.T.S.
DATE: 07-19-24
2,950 RSF

BACK TO AVAILABILITY

Corporate License #01355491

NEWMARK

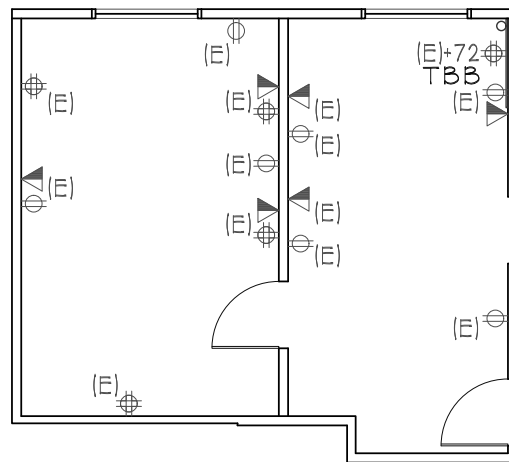
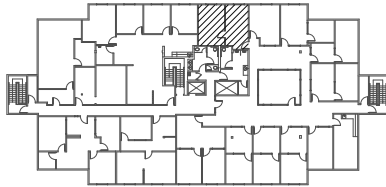
the **Muller**
company

The information contained herein has been obtained from sources deemed reliable but has not been verified and no guarantee, warranty or representation, either express or implied, is made with respect to such information. Terms of sale or lease and availability are subject to change or withdrawal without notice.



TORRANCE EXECUTIVE PLAZA

3828-3878 CARSON ST.
TORRANCE, CALIFORNIA



SUITE 310

SCALE: 1/8"=1'-0"

DATE: 07-01-2020

498 RSF



3848 Carson Street
Torrance, CA 90503

[BACK TO AVAILABILITY](#)

Corporate License #01355491

NEWMARK

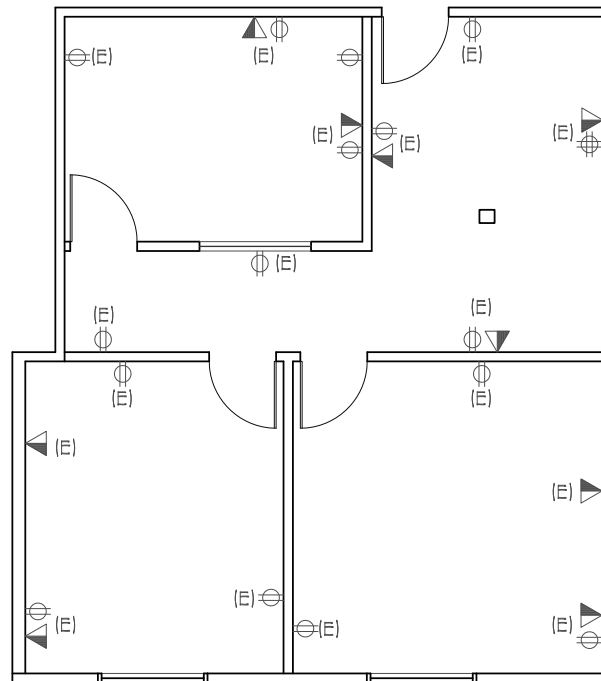
the **Muller**
company

The information contained herein has been obtained from sources deemed reliable but has not been verified and no guarantee, warranty or representation, either express or implied, is made with respect to such information. Terms of sale or lease and availability are subject to change or withdrawal without notice.



TORRANCE EXECUTIVE PLAZA

3828-3878 CARSON ST.
TORRANCE, CALIFORNIA



3848 Carson Street
Torrance, CA 90503



SUITE 320

SCALE: 1/8"=1'-0"
DATE: 10-30-19
911 RSF

BACK TO AVAILABILITY

Corporate License #01355491

NEWMARK

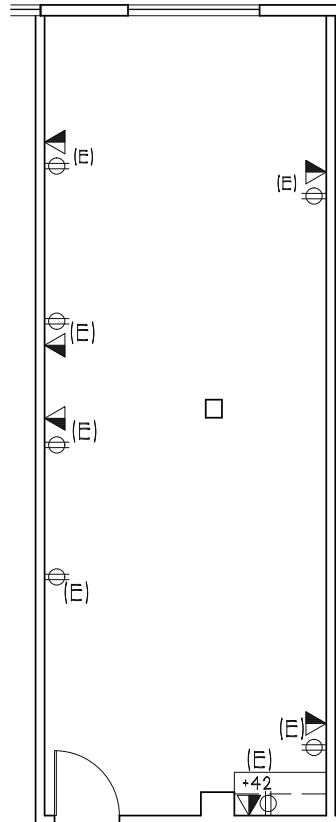
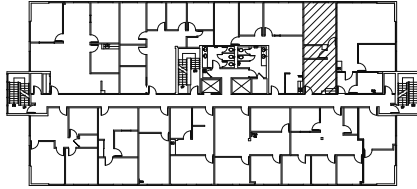
the **Muller**
company

The information contained herein has been obtained from sources deemed reliable but has not been verified and no guarantee, warranty or representation, either express or implied, is made with respect to such information. Terms of sale or lease and availability are subject to change or withdrawal without notice.

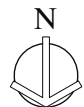


TORRANCE EXECUTIVE PLAZA

3828-3878 CARSON ST.
TORRANCE, CALIFORNIA



3858 Carson Street
Torrance, CA 90503



SUITE 202

SCALE: 1/8"=1'-0"
DATE: 01-16-25
586 RSF

BACK TO AVAILABILITY

Corporate License #01355491

NEWMARK

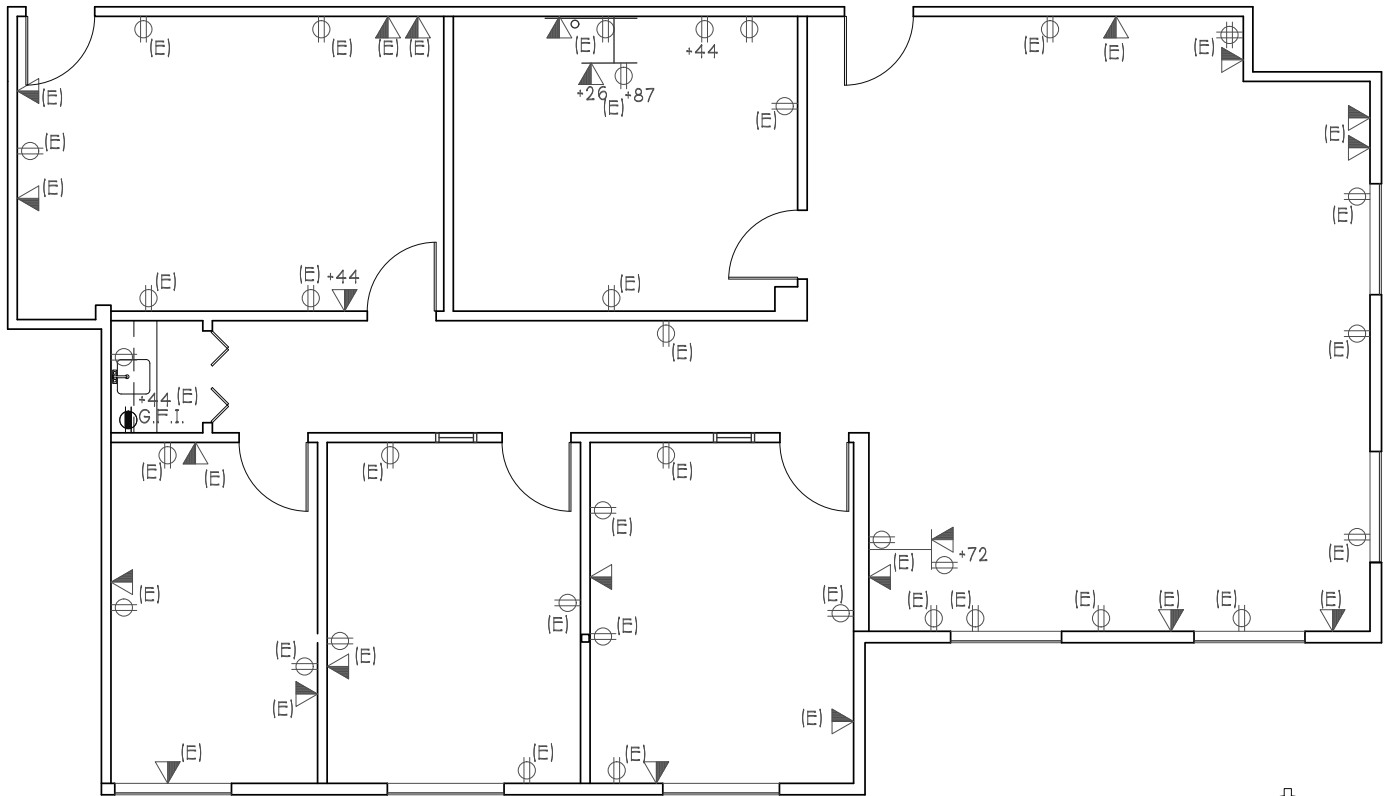
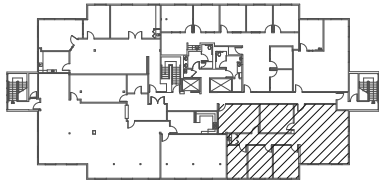
the **Muller**
company

The information contained herein has been obtained from sources deemed reliable but has not been verified and no guarantee, warranty or representation, either express or implied, is made with respect to such information. Terms of sale or lease and availability are subject to change or withdrawal without notice.



TORRANCE EXECUTIVE PLAZA

3828-3878 CARSON ST.
TORRANCE, CALIFORNIA



SUITE 301

SCALE: 1/8"=1'-0"

DATE: 06-06-22

2,029 RSF

3858 Carson Street

Torrance, CA 90503

BACK TO AVAILABILITY

Corporate License #01355491

NEWMARK

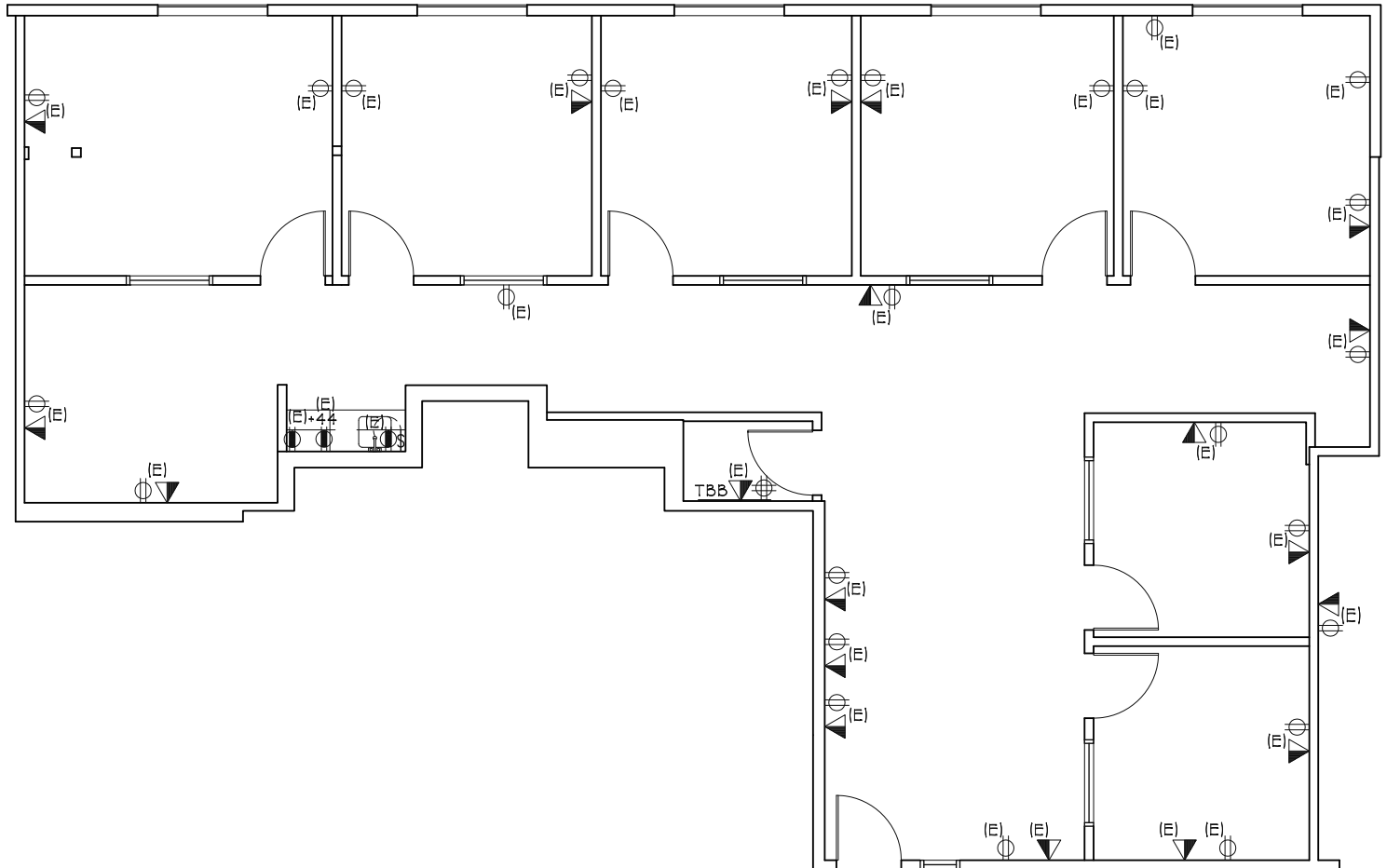
the **Muller**
company

The information contained herein has been obtained from sources deemed reliable but has not been verified and no guarantee, warranty or representation, either express or implied, is made with respect to such information. Terms of sale or lease and availability are subject to change or withdrawal without notice.



TORRANCE EXECUTIVE PLAZA

3828-3878 CARSON ST.
TORRANCE, CALIFORNIA



3858 Carson Street
Torrance, CA 90503



SUITE 303

SCALE: 1/8"=1'-0"

DATE: 02-23-17
2,000 RSF

BACK TO AVAILABILITY

Corporate License #01355491

NEWMARK

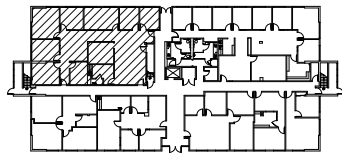
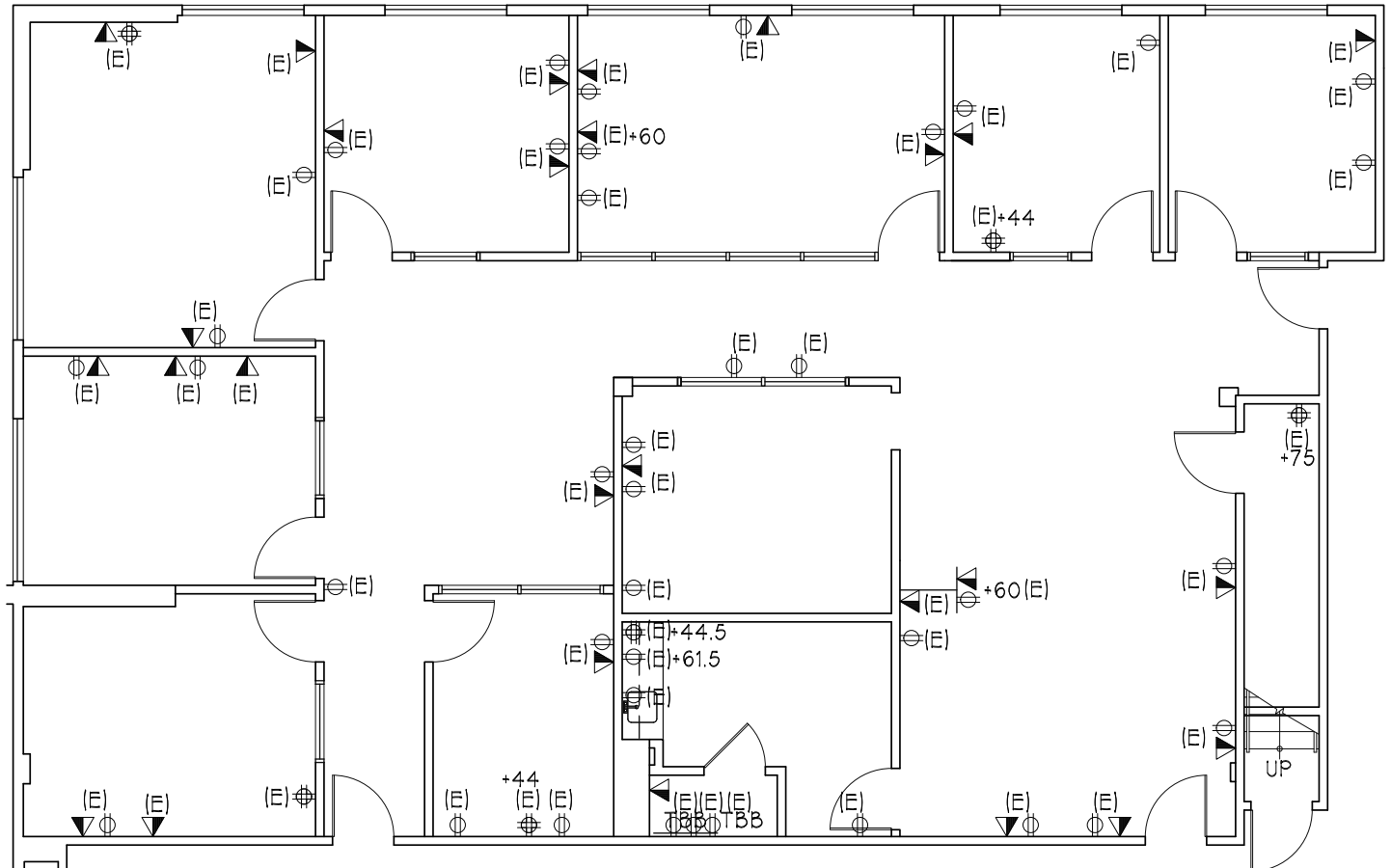
the **Muller**
company

The information contained herein has been obtained from sources deemed reliable but has not been verified and no guarantee, warranty or representation, either express or implied, is made with respect to such information. Terms of sale or lease and availability are subject to change or withdrawal without notice.



TORRANCE EXECUTIVE PLAZA

3828-3878 CARSON ST.
TORRANCE, CALIFORNIA



3868 Carson Street
Torrance, CA 90503



SUITE 110

SCALE: 1/8"=1'-0"
DATE: 02-27-25
2,988 RSF

BACK TO AVAILABILITY

Corporate License #01355491

NEWMARK

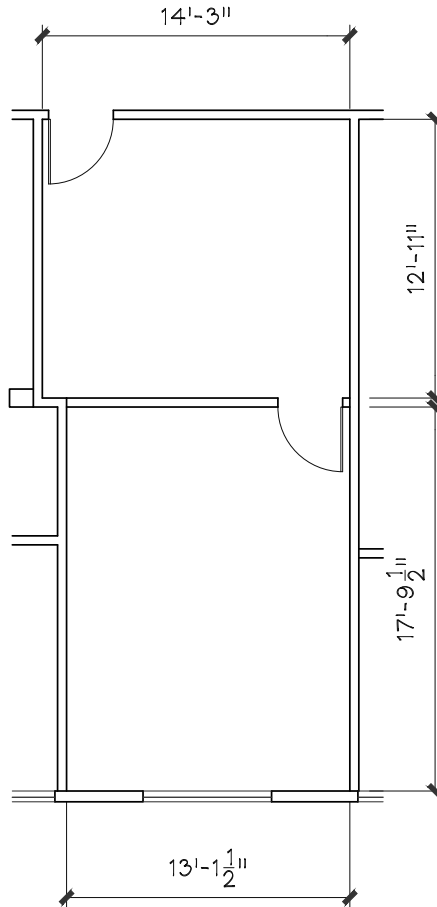
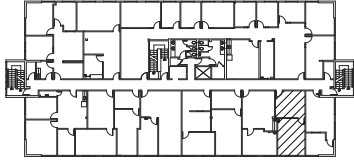
the **Muller**
company

The information contained herein has been obtained from sources deemed reliable but has not been verified and no guarantee, warranty or representation, either express or implied, is made with respect to such information. Terms of sale or lease and availability are subject to change or withdrawal without notice.



TORRANCE EXECUTIVE PLAZA

3828-3878 CARSON ST.
TORRANCE, CALIFORNIA



3868 Carson Street
Torrance, CA 90503

SUITE 205

SCALE: 1/8"=1'-0"

DATE: 07-14-25

520 RSF

BACK TO AVAILABILITY

Corporate License #01355491

NEWMARK

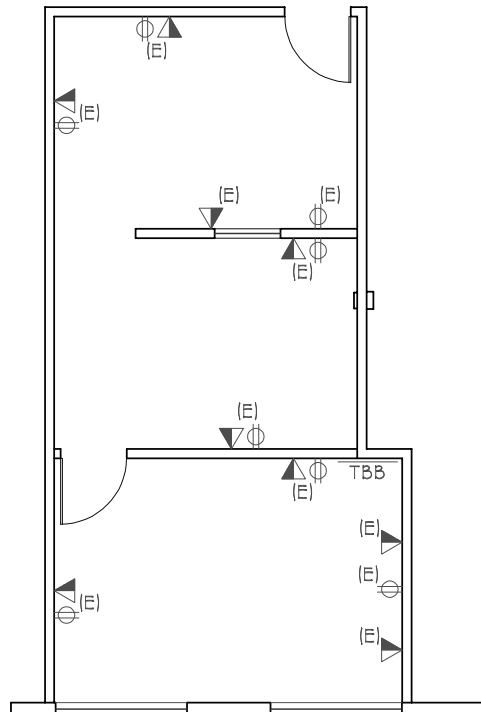
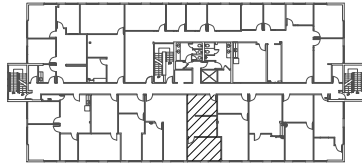
the **Muller**
company

The information contained herein has been obtained from sources deemed reliable but has not been verified and no guarantee, warranty or representation, either express or implied, is made with respect to such information. Terms of sale or lease and availability are subject to change or withdrawal without notice.



TORRANCE EXECUTIVE PLAZA

3828-3878 CARSON ST.
TORRANCE, CALIFORNIA



3868 Carson Street
Torrance, CA 90503



SUITE 209

SCALE: 1/8"=1'-0"
DATE: 10-26-2020
554 RSF

BACK TO AVAILABILITY

Corporate License #01355491

NEWMARK

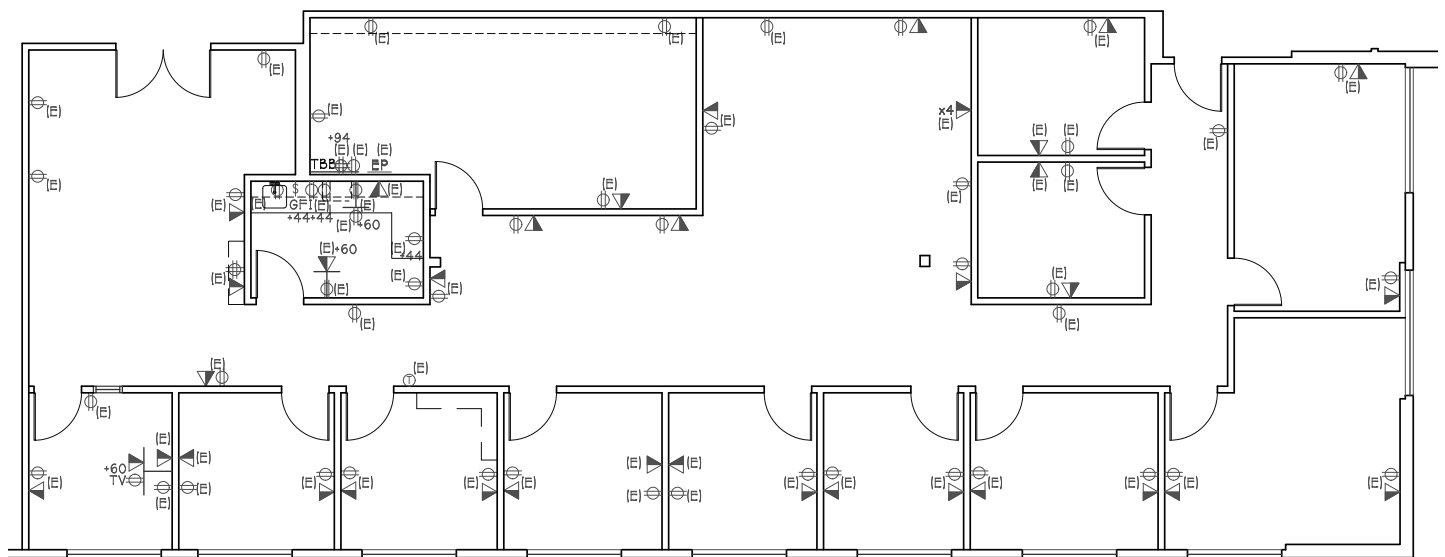
the **Muller**
company

The information contained herein has been obtained from sources deemed reliable but has not been verified and no guarantee, warranty or representation, either express or implied, is made with respect to such information. Terms of sale or lease and availability are subject to change or withdrawal without notice.



TORRANCE EXECUTIVE PLAZA

3828-3878 CARSON ST.
TORRANCE, CALIFORNIA



3878 Carson Street
Torrance, CA 90503



SUITE 220
SCALE: 3/32"=1'-0"
DATE: 09-18-19
3,181 RSF

BACK TO AVAILABILITY

Corporate License #01355491

NEWMARK

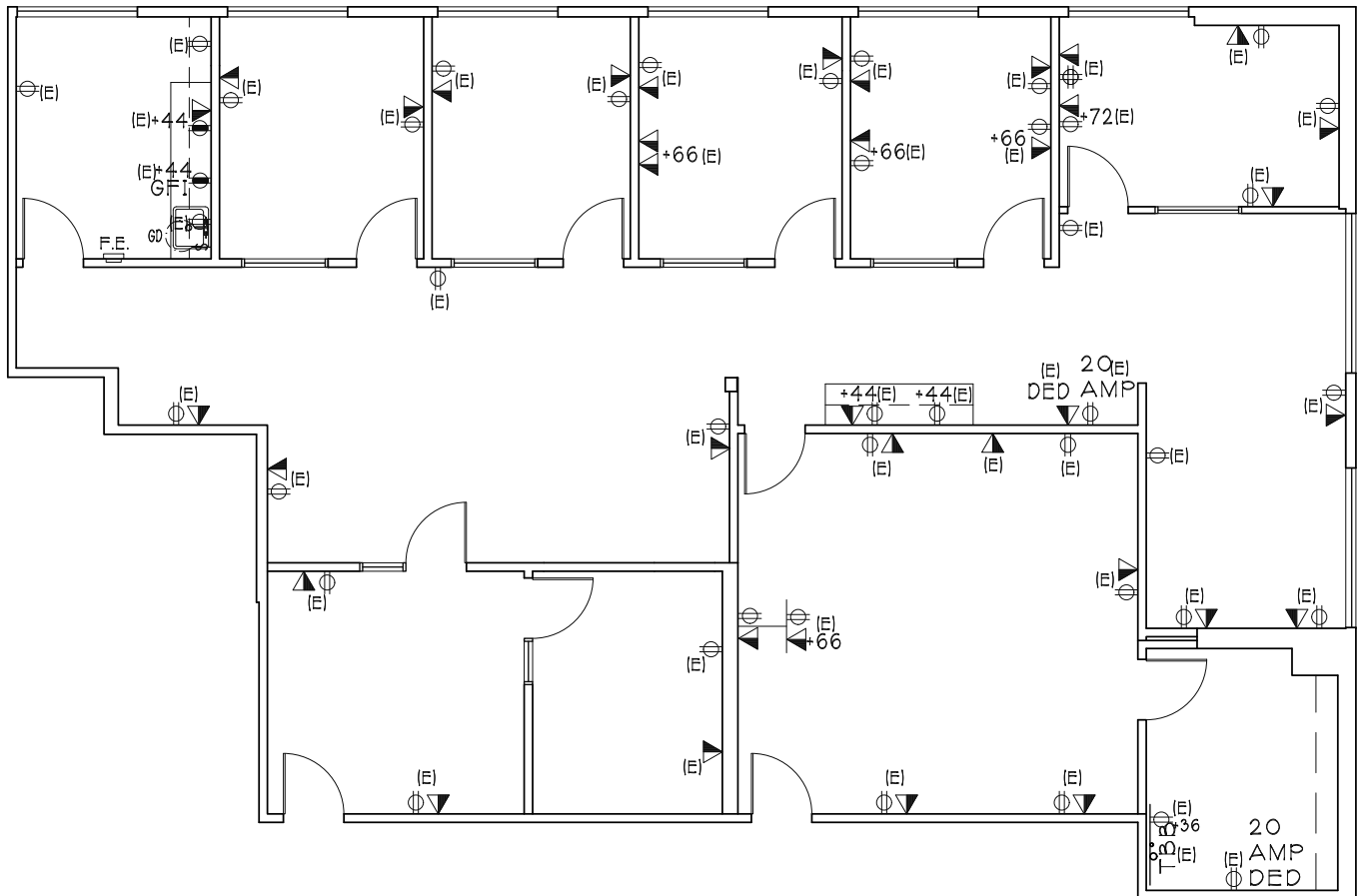
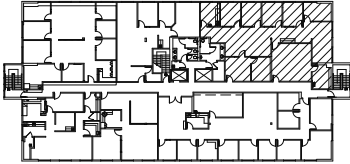
the **Muller**
company

The information contained herein has been obtained from sources deemed reliable but has not been verified and no guarantee, warranty or representation, either express or implied, is made with respect to such information. Terms of sale or lease and availability are subject to change or withdrawal without notice.



TORRANCE EXECUTIVE PLAZA

3828-3878 CARSON ST.
TORRANCE, CALIFORNIA



SUITE 225

SCALE: N.T.S.
DATE: 11-02-23
2,671 RSF

3878 Carson Street
Torrance, CA 90503

BACK TO AVAILABILITY

Corporate License #01355491

NEWMARK

the **Muller**
company

The information contained herein has been obtained from sources deemed reliable but has not been verified and no guarantee, warranty or representation, either express or implied, is made with respect to such information. Terms of sale or lease and availability are subject to change or withdrawal without notice.